

Classroom
Edition

BRAIN TRAINING WITH ...
**THE NEW NUMBER
CRUNCHERS**

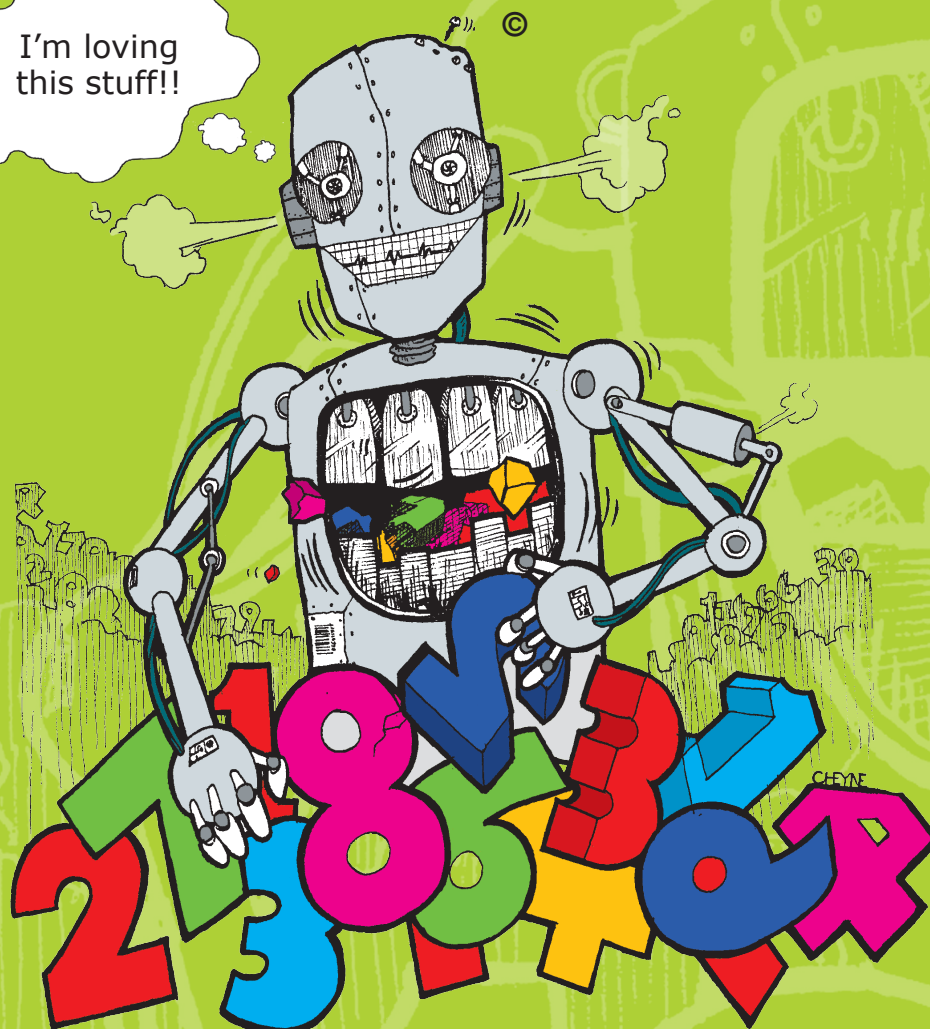
by Barry Clayton

LEVEL 2: SUBTRACTING

One Calculation - End Answers Only

(BASIC NUMBER FACTS)

I'm loving
this stuff!!



Robit McCruncher®

www.robitmccruncher.co.nz



**BRAINTOOLS FOR
BRAIN TRAINING**

**ALL AGES,
ALL STAGES**

I'm loving
this stuff!!



THE NEW NUMBER CRUNCHERS

BASIC NUMBER FACTS

LEVEL 2: SUBTRACTING - End answers only

LEVEL 2
SET 1

LIST A

1. $4-1 = \square$
2. $1-0 = \square$
3. $2-2 = \square$
4. $7-0 = \square$
5. $9-2 = \square$
6. $5-3 = \square$
7. $9-4 = \square$
8. $5-5 = \square$
9. $8-6 = \square$
10. $10-10 = \square$
11. $12-2 = \square$
12. $18-8 = \square$
13. $10-7 = \square$
14. $11-3 = \square$
15. $12-10 = \square$
16. $12-3 = \square$
17. $19-10 = \square$
18. $12-9 = \square$
19. $13-9 = \square$
20. $15-6 = \square$

LIST B

1. $2-0 = \square$
2. $3-1 = \square$
3. $4-2 = \square$
4. $5-1 = \square$
5. $10-2 = \square$
6. $6-3 = \square$
7. $7-4 = \square$
8. $6-5 = \square$
9. $7-6 = \square$
10. $9-9 = \square$
11. $13-3 = \square$
12. $19-9 = \square$
13. $9-8 = \square$
14. $11-4 = \square$
15. $13-10 = \square$
16. $11-9 = \square$
17. $12-4 = \square$
18. $13-5 = \square$
19. $13-7 = \square$
20. $15-8 = \square$

LIST C

1. $2-1 = \square$
2. $3-2 = \square$
3. $3-0 = \square$
4. $6-1 = \square$
5. $3-3 = \square$
6. $7-3 = \square$
7. $8-4 = \square$
8. $10-4 = \square$
9. $6-6 = \square$
10. $8-8 = \square$
11. $14-4 = \square$
12. $20-10 = \square$
13. $10-8 = \square$
14. $11-5 = \square$
15. $14-10 = \square$
16. $12-5 = \square$
17. $18-10 = \square$
18. $13-4 = \square$
19. $14-8 = \square$
20. $16-7 = \square$

LIST D

1. $4-0 = \square$
2. $7 \times 0 = \square$
3. $5-2 = \square$
4. $8-0 = \square$
5. $4-3 = \square$
6. $8-3 = \square$
7. $6-4 = \square$
8. $9-5 = \square$
9. $10-6 = \square$
10. $10-9 = \square$
11. $15-5 = \square$
12. $7-7 = \square$
13. $11-6 = \square$
14. $15-10 = \square$
15. $12-6 = \square$
16. $13-6 = \square$
17. $14-5 = \square$
18. $15-8 = \square$
19. $17-7 = \square$
20. $16-8 = \square$

LIST E

1. $8-1 = \square$
2. $5-0 = \square$
3. $6-2 = \square$
4. $9-0 = \square$
5. $8-2 = \square$
6. $9-3 = \square$
7. $5-4 = \square$
8. $8-5 = \square$
9. $10-5 = \square$
10. $11-2 = \square$
11. $16-6 = \square$
12. $8-7 = \square$
13. $11-7 = \square$
14. $16-10 = \square$
15. $12-7 = \square$
16. $13-8 = \square$
17. $14-6 = \square$
18. $14-9 = \square$
19. $15-7 = \square$
20. $16-9 = \square$

LIST F

1. $10-1 = \square$
2. $6-0 = \square$
3. $9-1 = \square$
4. $1-1 = \square$
5. $7-2 = \square$
6. $10-3 = \square$
7. $4-4 = \square$
8. $7-5 = \square$
9. $9-6 = \square$
10. $11-1 = \square$
11. $17-7 = \square$
12. $9-7 = \square$
13. $11-8 = \square$
14. $17-10 = \square$
15. $11-10 = \square$
16. $12-8 = \square$
17. $13-5 = \square$
18. $14-7 = \square$
19. $18-9 = \square$
20. $17-8 = \square$



PUBLISHED IN NEW ZEALAND BY
THE OUTER EDGE LTD

© Copyright 2010 Barry Clayton

www.robitmccruncher.co.nz

I'm loving
this stuff!!



THE NEW NUMBER CRUNCHERS

BASIC NUMBER FACTS

LEVEL 2: SUBTRACTING - End answers only

LEVEL 2
SET 2

LIST A

1. $1-0 = \square$
2. $4-1 = \square$
3. $7-0 = \square$
4. $2-2 = \square$
5. $5-3 = \square$
6. $9-2 = \square$
7. $5-5 = \square$
8. $9-4 = \square$
9. $10-10 = \square$
10. $8-6 = \square$
11. $18-8 = \square$
12. $12-2 = \square$
13. $11-3 = \square$
14. $10-7 = \square$
15. $12-3 = \square$
16. $12-10 = \square$
17. $12-9 = \square$
18. $19-10 = \square$
19. $15-6 = \square$
20. $13-9 = \square$

LIST B

1. $3-1 = \square$
2. $2-0 = \square$
3. $5-1 = \square$
4. $4-2 = \square$
5. $6-3 = \square$
6. $10-2 = \square$
7. $6-5 = \square$
8. $7-4 = \square$
9. $9-9 = \square$
10. $7-6 = \square$
11. $19-9 = \square$
12. $13-3 = \square$
13. $11-4 = \square$
14. $9-8 = \square$
15. $11-9 = \square$
16. $13-10 = \square$
17. $13-5 = \square$
18. $12-4 = \square$
19. $15-8 = \square$
20. $13-7 = \square$

LIST C

1. $3-2 = \square$
2. $2-1 = \square$
3. $6-1 = \square$
4. $3-0 = \square$
5. $7-3 = \square$
6. $3-3 = \square$
7. $10-4 = \square$
8. $8-4 = \square$
9. $8-8 = \square$
10. $6-6 = \square$
11. $20-10 = \square$
12. $14-4 = \square$
13. $11-5 = \square$
14. $10-8 = \square$
15. $12-5 = \square$
16. $14-10 = \square$
17. $13-4 = \square$
18. $18-10 = \square$
19. $16-7 = \square$
20. $14-8 = \square$

LIST D

1. $7-1 = \square$
2. $4-0 = \square$
3. $8-0 = \square$
4. $5-2 = \square$
5. $8-3 = \square$
6. $4-3 = \square$
7. $9-5 = \square$
8. $6-4 = \square$
9. $10-9 = \square$
10. $10-6 = \square$
11. $7-7 = \square$
12. $15-5 = \square$
13. $15-10 = \square$
14. $11-6 = \square$
15. $13-6 = \square$
16. $12-6 = \square$
17. $15-8 = \square$
18. $14-5 = \square$
19. $16-8 = \square$
20. $17-7 = \square$

LIST E

1. $5-0 = \square$
2. $8-1 = \square$
3. $9-0 = \square$
4. $6-2 = \square$
5. $9-3 = \square$
6. $8-2 = \square$
7. $8-5 = \square$
8. $5-4 = \square$
9. $11-2 = \square$
10. $10-5 = \square$
11. $8-7 = \square$
12. $16-6 = \square$
13. $16-10 = \square$
14. $11-7 = \square$
15. $13-8 = \square$
16. $12-7 = \square$
17. $14-9 = \square$
18. $14-6 = \square$
19. $16-9 = \square$
20. $15-7 = \square$

LIST F

1. $6-0 = \square$
2. $10-1 = \square$
3. $1-1 = \square$
4. $9-1 = \square$
5. $10-3 = \square$
6. $7-2 = \square$
7. $7-5 = \square$
8. $4-4 = \square$
9. $11-1 = \square$
10. $9-6 = \square$
11. $9-7 = \square$
12. $17-7 = \square$
13. $17-10 = \square$
14. $11-8 = \square$
15. $12-8 = \square$
16. $11-10 = \square$
17. $14-7 = \square$
18. $13-5 = \square$
19. $17-8 = \square$
20. $18-9 = \square$



PUBLISHED IN NEW ZEALAND BY
THE OUTER EDGE LTD

© Copyright 2010 Barry Clayton

www.robitmccruncher.co.nz

I'm loving
this stuff!!



THE NEW NUMBER CRUNCHERS

BASIC NUMBER FACTS

LEVEL 2: SUBTRACTING - End answers only

LEVEL 2
SET 3

LIST A

1. $2-2 = \square$
2. $1-0 = \square$
3. $4-1 = \square$
4. $9-2 = \square$
5. $7-0 = \square$
6. $5-5 = \square$
7. $9-4 = \square$
8. $5-3 = \square$
9. $10-10 = \square$
10. $8-6 = \square$
11. $10-7 = \square$
12. $18-8 = \square$
13. $12-2 = \square$
14. $12-10 = \square$
15. $11-3 = \square$
16. $12-9 = \square$
17. $19-10 = \square$
18. $12-3 = \square$
19. $15-6 = \square$
20. $13-9 = \square$

LIST B

1. $4-2 = \square$
2. $3-1 = \square$
3. $2-0 = \square$
4. $10-2 = \square$
5. $5-1 = \square$
6. $6-5 = \square$
7. $7-4 = \square$
8. $6-3 = \square$
9. $9-9 = \square$
10. $7-6 = \square$
11. $9-8 = \square$
12. $19-9 = \square$
13. $13-3 = \square$
14. $13-10 = \square$
15. $11-4 = \square$
16. $13-5 = \square$
17. $12-4 = \square$
18. $11-9 = \square$
19. $15-8 = \square$
20. $13-7 = \square$

LIST C

1. $3-0 = \square$
2. $3-2 = \square$
3. $2-1 = \square$
4. $3-3 = \square$
5. $6-1 = \square$
6. $10-4 = \square$
7. $8-4 = \square$
8. $7-3 = \square$
9. $8-8 = \square$
10. $6-6 = \square$
11. $10-8 = \square$
12. $20-10 = \square$
13. $14-4 = \square$
14. $14-10 = \square$
15. $11-5 = \square$
16. $13-4 = \square$
17. $18-10 = \square$
18. $12-5 = \square$
19. $16-7 = \square$
20. $14-8 = \square$

LIST D

1. $5-2 = \square$
2. $7-1 = \square$
3. $4-0 = \square$
4. $4-3 = \square$
5. $8-0 = \square$
6. $9-5 = \square$
7. $6-4 = \square$
8. $8-3 = \square$
9. $10-9 = \square$
10. $10-6 = \square$
11. $11-6 = \square$
12. $7-7 = \square$
13. $15-5 = \square$
14. $12-6 = \square$
15. $15-10 = \square$
16. $15-8 = \square$
17. $14-5 = \square$
18. $13-6 = \square$
19. $16-8 = \square$
20. $17-7 = \square$

LIST E

1. $6-2 = \square$
2. $5-0 = \square$
3. $8-1 = \square$
4. $8-2 = \square$
5. $9-0 = \square$
6. $8-5 = \square$
7. $5-4 = \square$
8. $9-3 = \square$
9. $11-2 = \square$
10. $10-5 = \square$
11. $11-7 = \square$
12. $8-7 = \square$
13. $16-6 = \square$
14. $12-7 = \square$
15. $16-10 = \square$
16. $14-9 = \square$
17. $14-6 = \square$
18. $13-8 = \square$
19. $16-9 = \square$
20. $15-7 = \square$

LIST F

1. $9-1 = \square$
2. $6-0 = \square$
3. $10-1 = \square$
4. $7-2 = \square$
5. $1-1 = \square$
6. $7-5 = \square$
7. $4-4 = \square$
8. $10-3 = \square$
9. $11-1 = \square$
10. $9-6 = \square$
11. $11-8 = \square$
12. $9-7 = \square$
13. $17-7 = \square$
14. $11-10 = \square$
15. $17-10 = \square$
16. $14-7 = \square$
17. $13-5 = \square$
18. $12-8 = \square$
19. $17-8 = \square$
20. $18-9 = \square$



PUBLISHED IN NEW ZEALAND BY
THE OUTER EDGE LTD

© Copyright 2010 Barry Clayton

www.robitmccruncher.co.nz

I'm loving
this stuff!!



THE NEW NUMBER CRUNCHERS

BASIC NUMBER FACTS

LEVEL 2: SUBTRACTING - End answers only

LEVEL 2
SET 4

LIST A

1. $7-0 = \square$
2. $2-2 = \square$
3. $1-0 = \square$
4. $4-1 = \square$
5. $9-2 = \square$
6. $8-6 = \square$
7. $5-5 = \square$
8. $9-4 = \square$
9. $5-3 = \square$
10. $10-10 = \square$
11. $11-3 = \square$
12. $10-7 = \square$
13. $18-8 = \square$
14. $12-2 = \square$
15. $12-10 = \square$
16. $13-9 = \square$
17. $12-9 = \square$
18. $19-10 = \square$
19. $15-6 = \square$
20. $12-3 = \square$

LIST B

1. $5-1 = \square$
2. $4-2 = \square$
3. $3-1 = \square$
4. $10-2 = \square$
5. $2-0 = \square$
6. $7-6 = \square$
7. $6-5 = \square$
8. $7-4 = \square$
9. $9-9 = \square$
10. $6-3 = \square$
11. $11-4 = \square$
12. $9-8 = \square$
13. $19-9 = \square$
14. $13-10 = \square$
15. $13-3 = \square$
16. $13-7 = \square$
17. $13-5 = \square$
18. $12-5 = \square$
19. $15-8 = \square$
20. $11-9 = \square$

LIST C

1. $6-1 = \square$
2. $3-0 = \square$
3. $3-2 = \square$
4. $3-3 = \square$
5. $2-1 = \square$
6. $6-6 = \square$
7. $10-4 = \square$
8. $8-4 = \square$
9. $8-8 = \square$
10. $7-3 = \square$
11. $11-5 = \square$
12. $10-8 = \square$
13. $20-10 = \square$
14. $11-5 = \square$
15. $14-4 = \square$
16. $14-8 = \square$
17. $13-4 = \square$
18. $18-10 = \square$
19. $16-7 = \square$
20. $12-5 = \square$

LIST D

1. $8-0 = \square$
2. $5-2 = \square$
3. $7-1 = \square$
4. $4-0 = \square$
5. $4-3 = \square$
6. $10-6 = \square$
7. $9-5 = \square$
8. $6-4 = \square$
9. $10-9 = \square$
10. $8-3 = \square$
11. $15-10 = \square$
12. $11-6 = \square$
13. $7-7 = \square$
14. $12-6 = \square$
15. $15-5 = \square$
16. $17-7 = \square$
17. $15-8 = \square$
18. $14-5 = \square$
19. $16-8 = \square$
20. $13-6 = \square$

LIST E

1. $9-0 = \square$
2. $6-2 = \square$
3. $5-0 = \square$
4. $8-2 = \square$
5. $8-1 = \square$
6. $10-5 = \square$
7. $8-5 = \square$
8. $5-4 = \square$
9. $11-2 = \square$
10. $9-3 = \square$
11. $16-10 = \square$
12. $11-7 = \square$
13. $8-7 = \square$
14. $12-7 = \square$
15. $16-6 = \square$
16. $15-7 = \square$
17. $14-9 = \square$
18. $14-6 = \square$
19. $16-9 = \square$
20. $13-8 = \square$

LIST F

1. $1-1 = \square$
2. $9-1 = \square$
3. $6-0 = \square$
4. $7-2 = \square$
5. $10-1 = \square$
6. $9-6 = \square$
7. $7-5 = \square$
8. $4-4 = \square$
9. $11-1 = \square$
10. $10-3 = \square$
11. $17-10 = \square$
12. $11-8 = \square$
13. $9-7 = \square$
14. $11-10 = \square$
15. $17-7 = \square$
16. $18-9 = \square$
17. $13-5 = \square$
18. $14-7 = \square$
19. $17-8 = \square$
20. $12-8 = \square$

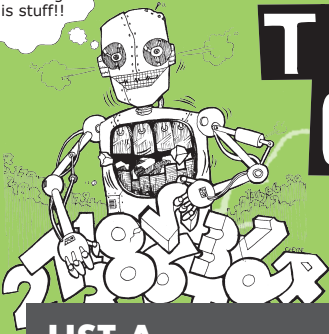


PUBLISHED IN NEW ZEALAND BY
THE OUTER EDGE LTD

© Copyright 2010 Barry Clayton

www.robitmccruncher.co.nz

I'm loving
this stuff!!



THE NEW NUMBER CRUNCHERS

BASIC NUMBER FACTS

LEVEL 2: SUBTRACTING - End answers only

LEVEL 2
SET 5

LIST A

1. $2-2 = \square$
2. $7-0 = \square$
3. $9-2 = \square$
4. $1-0 = \square$
5. $4-1 = \square$
6. $5-5 = \square$
7. $8-6 = \square$
8. $10-10 = \square$
9. $9-4 = \square$
10. $5-3 = \square$
11. $10-7 = \square$
12. $11-3 = \square$
13. $12-10 = \square$
14. $18-8 = \square$
15. $12-2 = \square$
16. $12-9 = \square$
17. $13-9 = \square$
18. $15-6 = \square$
19. $19-10 = \square$
20. $12-3 = \square$

LIST B

1. $4-2 = \square$
2. $5-1 = \square$
3. $10-2 = \square$
4. $3-1 = \square$
5. $2-0 = \square$
6. $6-5 = \square$
7. $7-6 = \square$
8. $9-9 = \square$
9. $7-4 = \square$
10. $6-3 = \square$
11. $9-8 = \square$
12. $11-4 = \square$
13. $13-10 = \square$
14. $19-9 = \square$
15. $13-3 = \square$
16. $13-5 = \square$
17. $13-7 = \square$
18. $15-8 = \square$
19. $12-4 = \square$
20. $11-9 = \square$

LIST C

1. $3-0 = \square$
2. $6-1 = \square$
3. $3-3 = \square$
4. $3-2 = \square$
5. $2-1 = \square$
6. $10-4 = \square$
7. $6-6 = \square$
8. $8-8 = \square$
9. $8-4 = \square$
10. $7-3 = \square$
11. $10-8 = \square$
12. $11-5 = \square$
13. $14-10 = \square$
14. $20-10 = \square$
15. $14-4 = \square$
16. $13-4 = \square$
17. $14-8 = \square$
18. $16-7 = \square$
19. $18-10 = \square$
20. $12-5 = \square$

LIST D

1. $5-2 = \square$
2. $8-0 = \square$
3. $4-3 = \square$
4. $7-1 = \square$
5. $4-0 = \square$
6. $9-5 = \square$
7. $10-6 = \square$
8. $10-9 = \square$
9. $6-4 = \square$
10. $8-3 = \square$
11. $11-6 = \square$
12. $15-10 = \square$
13. $12-6 = \square$
14. $7-7 = \square$
15. $15-5 = \square$
16. $15-8 = \square$
17. $17-7 = \square$
18. $16-8 = \square$
19. $14-5 = \square$
20. $13-6 = \square$

LIST E

1. $6-2 = \square$
2. $9-0 = \square$
3. $8-2 = \square$
4. $5-0 = \square$
5. $8-1 = \square$
6. $8-5 = \square$
7. $10-5 = \square$
8. $11-2 = \square$
9. $5-4 = \square$
10. $9-3 = \square$
11. $11-7 = \square$
12. $16-10 = \square$
13. $12-7 = \square$
14. $8-7 = \square$
15. $16-6 = \square$
16. $14-9 = \square$
17. $15-7 = \square$
18. $16-9 = \square$
19. $14-6 = \square$
20. $13-8 = \square$

LIST F

1. $9-1 = \square$
2. $1-1 = \square$
3. $7-2 = \square$
4. $6-0 = \square$
5. $10-1 = \square$
6. $7-5 = \square$
7. $9-6 = \square$
8. $11-1 = \square$
9. $4-4 = \square$
10. $10-3 = \square$
11. $11-8 = \square$
12. $17-10 = \square$
13. $11-10 = \square$
14. $9-7 = \square$
15. $17-7 = \square$
16. $14-7 = \square$
17. $18-9 = \square$
18. $17-8 = \square$
19. $13-5 = \square$
20. $12-8 = \square$



PUBLISHED IN NEW ZEALAND BY
THE OUTER EDGE LTD

© Copyright 2010 Barry Clayton

www.robitmccruncher.co.nz

I'm loving
this stuff!!



THE NEW NUMBER CRUNCHERS

BASIC NUMBER FACTS

LEVEL 2: SUBTRACTING - End answers only

LEVEL 2
SET 6

LIST A

1. $6-0 = \square$
2. $4-2 = \square$
3. $4-1 = \square$
4. $5-1 = \square$
5. $7-2 = \square$
6. $10-3 = \square$
7. $6-4 = \square$
8. $5-5 = \square$
9. $9-6 = \square$
10. $8-8 = \square$
11. $15-5 = \square$
12. $9-7 = \square$
13. $11-6 = \square$
14. $17-10 = \square$
15. $12-6 = \square$
16. $12-8 = \square$
17. $14-7 = \square$
18. $13-4 = \square$
19. $17-7 = \square$
20. $15-8 = \square$

LIST B

1. $5-0 = \square$
2. $1-0 = \square$
3. $2-1 = \square$
4. $6-1 = \square$
5. $8-2 = \square$
6. $9-3 = \square$
7. $5-4 = \square$
8. $6-5 = \square$
9. $10-5 = \square$
10. $9-9 = \square$
11. $16-6 = \square$
12. $8-7 = \square$
13. $11-7 = \square$
14. $16-10 = \square$
15. $12-7 = \square$
16. $13-8 = \square$
17. $14-6 = \square$
18. $13-5 = \square$
19. $15-7 = \square$
20. $16-8 = \square$

LIST C

1. $7-1 = \square$
2. $5-2 = \square$
3. $2-0 = \square$
4. $8-0 = \square$
5. $4-3 = \square$
6. $8-3 = \square$
7. $4-4 = \square$
8. $10-4 = \square$
9. $8-6 = \square$
10. $10-10 = \square$
11. $17-7 = \square$
12. $7-7 = \square$
13. $11-8 = \square$
14. $15-10 = \square$
15. $11-10 = \square$
16. $13-6 = \square$
17. $14-5 = \square$
18. $12-9 = \square$
19. $18-9 = \square$
20. $16-7 = \square$

LIST D

1. $1-0 = \square$
2. $9-1 = \square$
3. $4-0 = \square$
4. $1-1 = \square$
5. $3-3 = \square$
6. $7-3 = \square$
7. $9-4 = \square$
8. $8-5 = \square$
9. $10-6 = \square$
10. $11-1 = \square$
11. $12-2 = \square$
12. $20-10 = \square$
13. $10-7 = \square$
14. $11-5 = \square$
15. $14-10 = \square$
16. $12-3 = \square$
17. $19-10 = \square$
18. $14-7 = \square$
19. $13-9 = \square$
20. $17-8 = \square$

LIST E

1. $3-2 = \square$
2. $3-0 = \square$
3. $10-1 = \square$
4. $9-0 = \square$
5. $10-2 = \square$
6. $6-3 = \square$
7. $7-4 = \square$
8. $9-5 = \square$
9. $7-6 = \square$
10. $11-2 = \square$
11. $13-3 = \square$
12. $19-9 = \square$
13. $9-8 = \square$
14. $11-4 = \square$
15. $13-10 = \square$
16. $11-9 = \square$
17. $12-4 = \square$
18. $14-9 = \square$
19. $13-7 = \square$
20. $15-8 = \square$

LIST F

1. $3-1 = \square$
2. $6-2 = \square$
3. $8-1 = \square$
4. $7-0 = \square$
5. $9-2 = \square$
6. $5-3 = \square$
7. $8-4 = \square$
8. $7-5 = \square$
9. $6-6 = \square$
10. $10-9 = \square$
11. $14-4 = \square$
12. $18-8 = \square$
13. $10-8 = \square$
14. $11-3 = \square$
15. $12-10 = \square$
16. $12-5 = \square$
17. $18-10 = \square$
18. $15-8 = \square$
19. $14-8 = \square$
20. $16-9 = \square$



PUBLISHED IN NEW ZEALAND BY
THE OUTER EDGE LTD

© Copyright 2010 Barry Clayton

www.robitmccruncher.co.nz

I'm loving
this stuff!!



THE NEW NUMBER CRUNCHERS

BASIC NUMBER FACTS

LEVEL 2: SUBTRACTING - End answers only

LEVEL 2
SET 7

LIST A

1. $4-2 = \square$
2. $6-1 = \square$
3. $5-1 = \square$
4. $4-1 = \square$
5. $10-3 = \square$
6. $7-2 = \square$
7. $5-5 = \square$
8. $6-4 = \square$
9. $8-8 = \square$
10. $9-6 = \square$
11. $9-7 = \square$
12. $15-5 = \square$
13. $17-10 = \square$
14. $11-6 = \square$
15. $12-8 = \square$
16. $12-6 = \square$
17. $13-4 = \square$
18. $14-7 = \square$
19. $15-8 = \square$
20. $17-7 = \square$

LIST B

1. $1-0 = \square$
2. $5-0 = \square$
3. $6-1 = \square$
4. $2-1 = \square$
5. $9-3 = \square$
6. $8-2 = \square$
7. $6-5 = \square$
8. $5-4 = \square$
9. $9-9 = \square$
10. $10-5 = \square$
11. $8-7 = \square$
12. $16-6 = \square$
13. $16-10 = \square$
14. $11-7 = \square$
15. $13-8 = \square$
16. $12-7 = \square$
17. $13-5 = \square$
18. $14-6 = \square$
19. $16-8 = \square$
20. $15-7 = \square$

LIST C

1. $5-2 = \square$
2. $7-1 = \square$
3. $8-0 = \square$
4. $2-0 = \square$
5. $8-3 = \square$
6. $4-3 = \square$
7. $10-4 = \square$
8. $4-4 = \square$
9. $10-10 = \square$
10. $8-6 = \square$
11. $7-7 = \square$
12. $17-7 = \square$
13. $15-10 = \square$
14. $11-8 = \square$
15. $13-6 = \square$
16. $11-10 = \square$
17. $12-9 = \square$
18. $14-5 = \square$
19. $16-7 = \square$
20. $18-9 = \square$

LIST D

1. $9-1 = \square$
2. $1-0 = \square$
3. $1-1 = \square$
4. $4-0 = \square$
5. $7-3 = \square$
6. $3-3 = \square$
7. $8-5 = \square$
8. $9-4 = \square$
9. $11-1 = \square$
10. $10-6 = \square$
11. $20-10 = \square$
12. $12-2 = \square$
13. $11-5 = \square$
14. $10-7 = \square$
15. $12-3 = \square$
16. $14-10 = \square$
17. $14-7 = \square$
18. $19-10 = \square$
19. $17-8 = \square$
20. $13-9 = \square$

LIST E

1. $3-2 = \square$
2. $3-0 = \square$
3. $9-0 = \square$
4. $10-1 = \square$
5. $6-3 = \square$
6. $10-2 = \square$
7. $9-5 = \square$
8. $7-4 = \square$
9. $11-2 = \square$
10. $7-6 = \square$
11. $19-9 = \square$
12. $13-3 = \square$
13. $11-4 = \square$
14. $9-8 = \square$
15. $11-9 = \square$
16. $13-10 = \square$
17. $14-9 = \square$
18. $12-4 = \square$
19. $15-8 = \square$
20. $13-7 = \square$

LIST F

1. $6-2 = \square$
2. $3-1 = \square$
3. $7-0 = \square$
4. $8-1 = \square$
5. $5-3 = \square$
6. $9-2 = \square$
7. $7-5 = \square$
8. $8-4 = \square$
9. $10-9 = \square$
10. $6-6 = \square$
11. $18-8 = \square$
12. $14-4 = \square$
13. $11-3 = \square$
14. $10-8 = \square$
15. $12-5 = \square$
16. $12-10 = \square$
17. $15-8 = \square$
18. $18-10 = \square$
19. $16-9 = \square$
20. $14-8 = \square$



PUBLISHED IN NEW ZEALAND BY
THE OUTER EDGE LTD

© Copyright 2010 Barry Clayton

www.robitmccruncher.co.nz

I'm loving
this stuff!!



THE NEW NUMBER CRUNCHERS

BASIC NUMBER FACTS

LEVEL 2: SUBTRACTING - End answers only

LEVEL 2
SET 10

LIST A

1. $4-1 = \square$
2. $4-2 = \square$
3. $6-0 = \square$
4. $7-2 = \square$
5. $5-1 = \square$
6. $5-5 = \square$
7. $6-4 = \square$
8. $10-3 = \square$
9. $8-8 = \square$
10. $9-6 = \square$
11. $11-6 = \square$
12. $9-7 = \square$
13. $15-5 = \square$
14. $12-6 = \square$
15. $17-10 = \square$
16. $13-4 = \square$
17. $14-7 = \square$
18. $12-8 = \square$
19. $15-8 = \square$
20. $17-7 = \square$

LIST B

1. $2-1 = \square$
2. $1-0 = \square$
3. $5-0 = \square$
4. $8-2 = \square$
5. $6-1 = \square$
6. $6-5 = \square$
7. $5-4 = \square$
8. $9-3 = \square$
9. $9-9 = \square$
10. $10-5 = \square$
11. $11-7 = \square$
12. $8-7 = \square$
13. $16-6 = \square$
14. $12-7 = \square$
15. $16-10 = \square$
16. $13-5 = \square$
17. $14-6 = \square$
18. $13-8 = \square$
19. $16-8 = \square$
20. $15-7 = \square$

LIST C

1. $2-0 = \square$
2. $5-2 = \square$
3. $7-1 = \square$
4. $4-3 = \square$
5. $8-0 = \square$
6. $10-4 = \square$
7. $4-4 = \square$
8. $8-3 = \square$
9. $10-10 = \square$
10. $8-6 = \square$
11. $11-8 = \square$
12. $7-7 = \square$
13. $17-7 = \square$
14. $11-10 = \square$
15. $15-10 = \square$
16. $12-9 = \square$
17. $14-5 = \square$
18. $13-6 = \square$
19. $16-7 = \square$
20. $18-9 = \square$

LIST D

1. $4-0 = \square$
2. $9-1 = \square$
3. $1-0 = \square$
4. $3-3 = \square$
5. $1-1 = \square$
6. $8-5 = \square$
7. $9-4 = \square$
8. $7-3 = \square$
9. $11-1 = \square$
10. $10-6 = \square$
11. $10-7 = \square$
12. $20-10 = \square$
13. $12-2 = \square$
14. $14-10 = \square$
15. $11-5 = \square$
16. $14-7 = \square$
17. $19-10 = \square$
18. $12-3 = \square$
19. $17-8 = \square$
20. $13-9 = \square$

LIST E

1. $10-1 = \square$
2. $3-0 = \square$
3. $3-2 = \square$
4. $10-2 = \square$
5. $9-0 = \square$
6. $9-5 = \square$
7. $7-4 = \square$
8. $6-3 = \square$
9. $11-2 = \square$
10. $7-6 = \square$
11. $9-8 = \square$
12. $19-9 = \square$
13. $13-3 = \square$
14. $13-10 = \square$
15. $11-4 = \square$
16. $14-9 = \square$
17. $12-4 = \square$
18. $11-9 = \square$
19. $15-8 = \square$
20. $13-7 = \square$

LIST F

1. $8-1 = \square$
2. $6-2 = \square$
3. $3-1 = \square$
4. $7-0 = \square$
5. $9-2 = \square$
6. $7-5 = \square$
7. $8-4 = \square$
8. $5-3 = \square$
9. $10-9 = \square$
10. $6-6 = \square$
11. $10-8 = \square$
12. $18-8 = \square$
13. $14-4 = \square$
14. $12-10 = \square$
15. $11-3 = \square$
16. $15-8 = \square$
17. $18-10 = \square$
18. $12-5 = \square$
19. $16-9 = \square$
20. $14-8 = \square$



PUBLISHED IN NEW ZEALAND BY
THE OUTER EDGE LTD

© Copyright 2010 Barry Clayton

www.robitmccruncher.co.nz

I'm loving
this stuff!!



THE NEW NUMBER CRUNCHERS

BASIC NUMBER FACTS

LEVEL 2: SUBTRACTING - End answers only

LEVEL 2
SET 9

LIST A

1. $5-1 = \square$
2. $4-1 = \square$
3. $4-2 = \square$
4. $6-0 = \square$
5. $7-2 = \square$
6. $9-6 = \square$
7. $5-5 = \square$
8. $6-4 = \square$
9. $10-7 = \square$
10. $8-8 = \square$
11. $17-10 = \square$
12. $11-6 = \square$
13. $9-7 = \square$
14. $15-5 = \square$
15. $12-6 = \square$
16. $17-7 = \square$
17. $13-4 = \square$
18. $14-7 = \square$
19. $15-8 = \square$
20. $12-8 = \square$

LIST B

1. $6-1 = \square$
2. $2-1 = \square$
3. $1-0 = \square$
4. $5-0 = \square$
5. $8-2 = \square$
6. $6-5 = \square$
7. $10-5 = \square$
8. $5-4 = \square$
9. $9-3 = \square$
10. $9-9 = \square$
11. $16-10 = \square$
12. $11-7 = \square$
13. $8-7 = \square$
14. $16-6 = \square$
15. $12-7 = \square$
16. $15-7 = \square$
17. $16-8 = \square$
18. $13-5 = \square$
19. $14-6 = \square$
20. $13-8 = \square$

LIST C

1. $8-0 = \square$
2. $2-0 = \square$
3. $5-2 = \square$
4. $7-1 = \square$
5. $4-3 = \square$
6. $8-6 = \square$
7. $10-4 = \square$
8. $4-4 = \square$
9. $8-3 = \square$
10. $10-10 = \square$
11. $15-10 = \square$
12. $11-8 = \square$
13. $7-7 = \square$
14. $17-7 = \square$
15. $11-10 = \square$
16. $18-9 = \square$
17. $12-9 = \square$
18. $14-5 = \square$
19. $16-7 = \square$
20. $13-6 = \square$

LIST D

1. $1-1 = \square$
2. $4-0 = \square$
3. $9-1 = \square$
4. $1-0 = \square$
5. $3-3 = \square$
6. $10-6 = \square$
7. $8-5 = \square$
8. $9-4 = \square$
9. $7-3 = \square$
10. $11-1 = \square$
11. $11-5 = \square$
12. $10-7 = \square$
13. $20-10 = \square$
14. $12-2 = \square$
15. $14-10 = \square$
16. $17-8 = \square$
17. $13-9 = \square$
18. $19-10 = \square$
19. $12-3 = \square$
20. $14-7 = \square$

LIST E

1. $9-0 = \square$
2. $10-1 = \square$
3. $3-0 = \square$
4. $3-2 = \square$
5. $10-2 = \square$
6. $7-6 = \square$
7. $9-5 = \square$
8. $7-4 = \square$
9. $11-2 = \square$
10. $6-3 = \square$
11. $11-4 = \square$
12. $9-8 = \square$
13. $19-9 = \square$
14. $13-3 = \square$
15. $13-10 = \square$
16. $14-9 = \square$
17. $13-7 = \square$
18. $12-4 = \square$
19. $15-8 = \square$
20. $11-9 = \square$

LIST F

1. $7-0 = \square$
2. $8-1 = \square$
3. $6-2 = \square$
4. $9-2 = \square$
5. $3-1 = \square$
6. $7-5 = \square$
7. $8-4 = \square$
8. $5-3 = \square$
9. $10-9 = \square$
10. $6-6 = \square$
11. $11-3 = \square$
12. $10-8 = \square$
13. $18-8 = \square$
14. $14-4 = \square$
15. $12-10 = \square$
16. $15-8 = \square$
17. $16-9 = \square$
18. $14-8 = \square$
19. $12-5 = \square$
20. $18-10 = \square$



PUBLISHED IN NEW ZEALAND BY
THE OUTER EDGE LTD

© Copyright 2010 Barry Clayton

www.robitmccruncher.co.nz

I'm loving
this stuff!!



THE NEW NUMBER CRUNCHERS

BASIC NUMBER FACTS

LEVEL 2: SUBTRACTING - End answers only



LIST A

1. $4-1 = \square$
2. $5-1 = \square$
3. $7-2 = \square$
4. $4-2 = \square$
5. $6-0 = \square$
6. $5-5 = \square$
7. $9-6 = \square$
8. $8-8 = \square$
9. $6-4 = \square$
10. $10-3 = \square$
11. $11-6 = \square$
12. $17-10 = \square$
13. $12-6 = \square$
14. $9-7 = \square$
15. $15-5 = \square$
16. $13-4 = \square$
17. $17-7 = \square$
18. $15-8 = \square$
19. $12-8 = \square$
20. $14-7 = \square$

LIST B

1. $2-1 = \square$
2. $6-1 = \square$
3. $8-2 = \square$
4. $1-0 = \square$
5. $5-0 = \square$
6. $6-5 = \square$
7. $10-5 = \square$
8. $9-9 = \square$
9. $5-4 = \square$
10. $9-3 = \square$
11. $11-7 = \square$
12. $16-10 = \square$
13. $12-7 = \square$
14. $8-7 = \square$
15. $16-6 = \square$
16. $13-5 = \square$
17. $15-7 = \square$
18. $16-8 = \square$
19. $14-6 = \square$
20. $13-8 = \square$

LIST C

1. $2-0 = \square$
2. $8-0 = \square$
3. $4-3 = \square$
4. $5-2 = \square$
5. $7-1 = \square$
6. $10-4 = \square$
7. $8-6 = \square$
8. $10-10 = \square$
9. $4-4 = \square$
10. $8-3 = \square$
11. $11-8 = \square$
12. $15-10 = \square$
13. $11-10 = \square$
14. $7-7 = \square$
15. $13-6 = \square$
16. $17-7 = \square$
17. $12-9 = \square$
18. $18-9 = \square$
19. $16-7 = \square$
20. $14-5 = \square$

LIST D

1. $4-0 = \square$
2. $1-1 = \square$
3. $3-3 = \square$
4. $9-1 = \square$
5. $1-0 = \square$
6. $8-5 = \square$
7. $10-6 = \square$
8. $11-1 = \square$
9. $9-4 = \square$
10. $7-3 = \square$
11. $10-7 = \square$
12. $11-5 = \square$
13. $14-10 = \square$
14. $20-10 = \square$
15. $12-2 = \square$
16. $14-7 = \square$
17. $13-9 = \square$
18. $17-8 = \square$
19. $19-10 = \square$
20. $12-3 = \square$

LIST E

1. $10-1 = \square$
2. $9-0 = \square$
3. $10-2 = \square$
4. $3-0 = \square$
5. $3-2 = \square$
6. $9-5 = \square$
7. $7-6 = \square$
8. $11-2 = \square$
9. $7-4 = \square$
10. $6-3 = \square$
11. $9-8 = \square$
12. $11-4 = \square$
13. $13-10 = \square$
14. $19-9 = \square$
15. $13-3 = \square$
16. $14-9 = \square$
17. $13-7 = \square$
18. $15-8 = \square$
19. $12-4 = \square$
20. $11-9 = \square$

LIST F

1. $8-1 = \square$
2. $7-0 = \square$
3. $9-2 = \square$
4. $6-2 = \square$
5. $3-1 = \square$
6. $7-5 = \square$
7. $6-6 = \square$
8. $10-9 = \square$
9. $8-4 = \square$
10. $5-3 = \square$
11. $10-8 = \square$
12. $11-3 = \square$
13. $12-10 = \square$
14. $18-8 = \square$
15. $14-4 = \square$
16. $18-9 = \square$
17. $14-8 = \square$
18. $16-9 = \square$
19. $18-10 = \square$
20. $12-5 = \square$

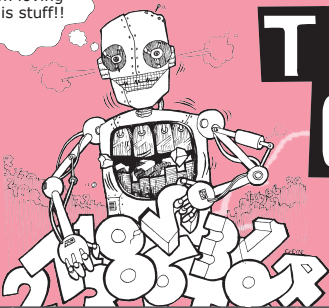


PUBLISHED IN NEW ZEALAND BY
THE OUTER EDGE LTD

© Copyright 2010 Barry Clayton

www.robitmccruncher.co.nz

I'm loving
this stuff!!



THE NEW NUMBER CRUNCHERS

BASIC NUMBER FACTS
ANSWERS FOR ALL SETS AT THIS LEVEL

LEVEL 2
ANSWERS

SET 1						
LIST						
A	B	C	D	E	F	
1	3	2	1	4	7	9
2	1	2	1	6	5	6
3	0	2	3	3	4	8
4	7	4	5	8	9	0
5	7	8	0	1	6	5
6	2	3	4	5	6	7
7	5	3	4	2	1	0
8	0	1	6	4	3	2
9	2	1	0	4	5	3
10	0	0	0	1	9	10
11	10	10	10	10	10	10
12	10	10	10	0	1	2
13	3	1	2	5	4	3
14	8	7	6	5	6	7
15	2	3	4	6	5	1
16	9	2	7	7	5	4
17	9	8	8	9	8	8
18	3	8	9	7	5	7
19	4	6	6	10	8	9
20	9	7	9	8	7	9

SET 2						
LIST						
A	B	C	D	E	F	
1	1	2	1	6	5	6
2	3	2	1	4	7	9
3	7	4	5	8	9	0
4	0	2	3	3	4	8
5	2	3	4	5	6	7
6	7	8	0	1	6	5
7	0	1	6	4	3	2
8	5	3	4	2	1	0
9	0	0	0	1	9	10
10	2	1	0	4	5	3
11	10	10	10	0	1	2
12	10	10	10	10	10	10
13	8	7	6	5	6	7
14	3	1	2	5	4	3
15	9	2	7	7	5	4
16	2	3	4	6	5	1
17	3	8	9	7	5	7
18	9	8	8	9	8	8
19	9	7	9	8	7	9
20	4	6	6	10	8	9

SET 3						
LIST						
A	B	C	D	E	F	
1	0	2	3	3	4	8
2	1	2	1	6	5	6
3	3	2	1	4	7	9
4	7	8	0	1	6	5
5	7	4	5	8	9	0
6	0	1	6	4	3	2
7	5	3	4	2	1	0
8	2	3	4	5	6	7
9	0	0	0	1	9	10
10	2	1	0	4	5	3
11	3	1	2	5	4	3
12	10	10	10	0	1	2
13	10	10	10	10	10	10
14	2	3	4	6	5	1
15	8	7	6	5	6	7
16	3	8	9	7	5	7
17	9	8	8	9	8	8
18	9	2	7	7	5	4
19	9	7	9	8	7	9
20	4	6	6	10	8	9

SET 4						
LIST						
A	B	C	D	E	F	
1	7	4	5	8	9	0
2	0	2	3	3	4	8
3	1	2	1	6	5	6
4	3	8	0	4	6	5
5	7	2	1	1	7	9
6	2	1	0	4	5	3
7	0	1	6	4	3	2
8	5	3	4	2	1	0
9	2	0	0	1	9	10
10	0	3	4	5	6	7
11	8	7	6	5	6	7
12	3	1	2	5	4	3
13	10	10	10	0	1	2
14	10	3	6	6	5	1
15	2	10	10	10	10	10
16	4	6	6	10	8	9
17	3	8	9	7	5	8
18	9	7	8	9	8	7
19	9	7	9	8	7	9
20	9	2	7	7	5	4

SET 5						
LIST						
A	B	C	D	E	F	
1	0	2	3	3	4	8
2	7	4	5	8	9	0
3	7	8	0	1	6	5
4	1	2	1	6	5	6
5	3	2	1	4	7	9
6	0	1	6	4	3	2
7	2	1	0	4	5	3
8	0	0	0	1	9	10
9	5	3	4	2	1	0
10	2	3	4	5	6	7
11	3	1	2	5	4	3
12	8	7	6	5	6	7
13	2	3	4	6	5	1
14	10	10	10	0	1	2
15	10	10	10	10	10	10
16	3	8	9	7	5	7
17	4	6	6	10	8	9
18	9	7	9	8	7	9
19	9	8	8	9	8	8
20	9	2	7	7	5	4

SET 6						
LIST						
A	B	C	D	E	F	
1	6	5	6	1	1	2
2	2	1	3	8	3	4
3	3	1	2	4	9	7
4	4	5	8	0	9	7
5	5	6	1	0	8	7
6	7	6	5	4	3	2
7	2	1	0	5	3	4
8	0	1	6	3	4	2
9	3	5	2	4	1	0
10	0	0	0	10	9	1
11	10	10	10	10	10	10
12	2	1	0	10	10	10
13	5	4	3	3	1	2
14	7	6	5	6	7	8
15	6	5	1	4	3	2
16	4	5	7	9	2	7
17	7	8	9	9	8	8
18	9	8	3	7	5	7
19	10	8	9	4	6	6
20	7	8	9	9	7	7

SET 7						
LIST						
A	B	C	D	E	F	
1	2	1	3	8	1	4
2	5	5	6	1	3	2
3	4	5	8	0	9	7
4	3	1	2	4	9	7
5	7	6	5	4	3	2
6	5	6	1	0	8	7
7	0	1	6	3	4	2
8	2	1	0	5	3	4
9	0	0	0	10	9	1
10	3	5	2	4	1	0
11	2	1	0	10	10	10
12	10	10	10	10	10	10
13	7	6	5	6	7	8
14	5	4	3	3	1	2
15	4	5	7	9	2	7
16	6	5	1	4	3	2
17	9	8	3	7	5	7
18	7	8	9	9	8	8
19	7	8	9	9	7	7
20	10	8	9	4	6	6

SET 8						
LIST						
A	B	C	D	E	F	
1	3	1	2	4	9	7
2	2	1	3	8	3	4
3	6	5	6	1	1	2
4	5	6	1	0	8	7
5	4	5	8	0	9	7
6	0	1	6	3	4	2
7	2	1	0	5	3	4
8	7	6	5	4	3	2
9	0	0	0	10	9	1
10	3	5	2	4	1	0
11	5	4	3	3	1	2
12	2	1	0	10	10	10
13	10	10	10	10	10	10
14	6	5	1	4	3	2
15	7	10	5	6	7	8
16	9	8	3	7	5	7
17	7	8	9	9	8	8
18	4	5	7	9	2	7
19	7	8	9	9	7	7
20	10	8	9	4	6	6

SET 9						
LIST						
A	B	C	D	E	F	
1	4	5	8	0	9	7
2	3	1	2	4	9	7
3	2	1	3	8	3	4
4	6	5	6	1	1	7
5	5	6	1	0	8	2
6	3	1	2	4	1	2
7	0	5	6	3	4	4
8	2	1	0	5	3	2
9	3	6	5	4	9	1
10	0	0	0	10	3	0
11	7	6	5	6	7	8
12	5	4	3	3	1	2
13	2	1	0	10	10	10
14	10	10	10	10	10	10
15	6	5	1	4	3	2
16	10	8	9	9	5	7
17	9	8	3	4	6	7
18	7	8	9	9	8	6
19	7	8	9	9	7	7
20	4	5	7	7	4	8

SET 10						
LIST						
A	B	C	D	E	F	
1	3	1	2	4	9	7
2	4	5	8	0	9	7
3	5	6	1	0	8	7
4	2	1	3	8	3	4
5	6	5	6	1	1	2
6	0	1	6	3	4	2
7	3	5	2	4	1	0
8	0	0	0	10	9	1
9	2	1	0	5	3	4
10	7	6	5	4	3	2
11	5	4	3	3	1	2
12	7	6	5	6	7	8
13	6	5	1	4	3	2
14	2	1	0	10	10	10
15	10	10	7	10	10	10
16	9	8	10	7	5	9
17	10	8	3	4	6	6
18	7	8	9	9	7	7
19	4	8	9	9	8	8
20	7	5	9	9	2	7



PUBLISHED IN NEW ZEALAND BY
THE OUTER EDGE LTD

© Copyright 2010 Barry Clayton

www.robitmccruncher.co.nz